

JAKARTA COMPOSITE INDEX



PREVIOUS 17 JANUARI 2020

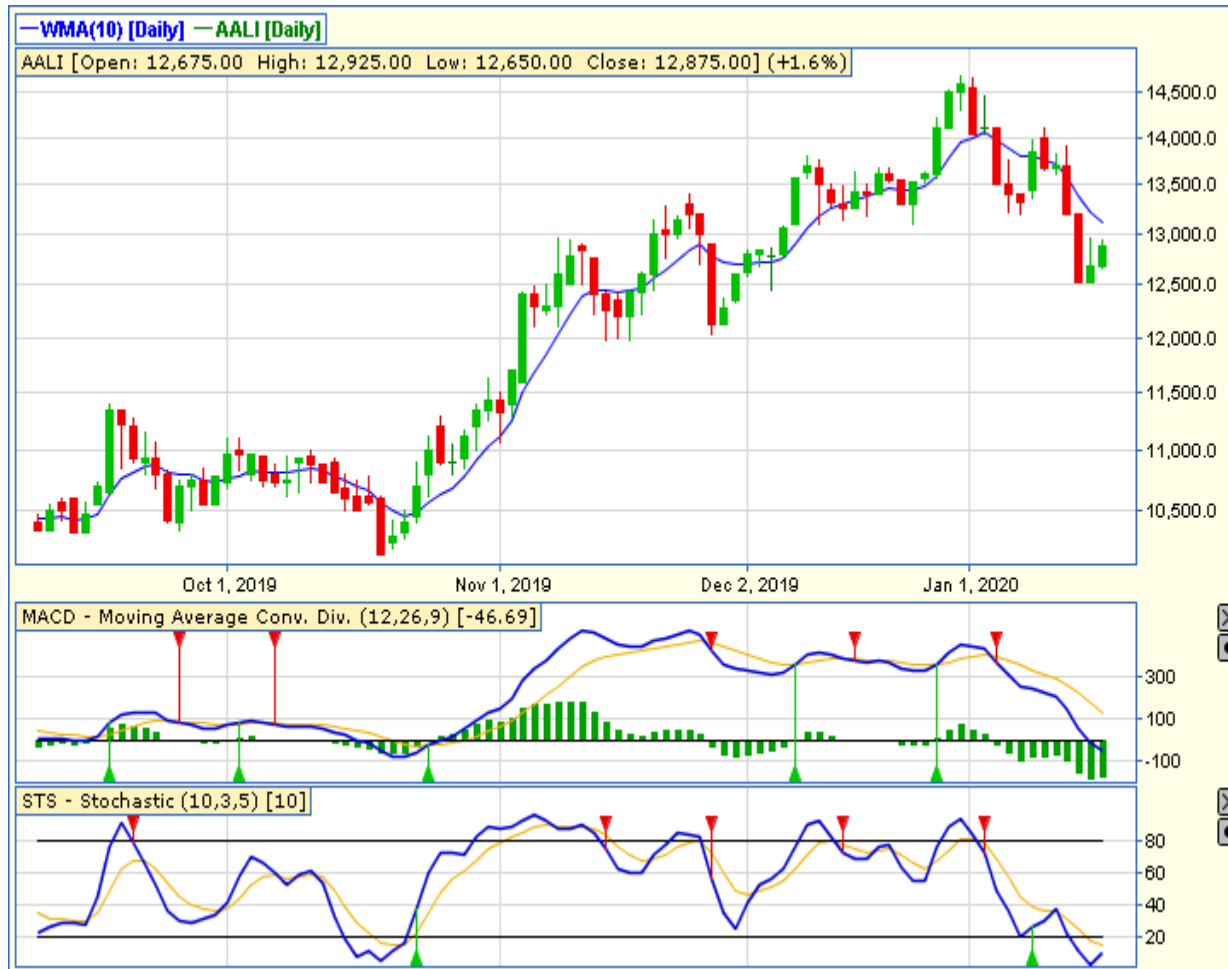
CLOSING	6291.657	+0.089%
TRANSACTION	IDR 6.16 TRILLION	
FOREIGN NETT	IDR 197.16 BIO (SELL)	

PREDICTION 20 JANUARI 2020

BULLISH
RANGE 6260-6350

DRAGONFLY DOJI
STOCHASTIC :GOLDEN CROSS
MACD : HISTOGRAM NEGATIF MENGEcil DAN NETRAL
DIAREA LOWER

TECHNICAL RECOMENDATION



AAI – PT ASTRA AGRO LESTARI TBK

CLOSING 17/1/2020 RP 12875(+1.6%)

BUY

TARGET PRICE 13800

STOPLOSS < 12650

TWO WHITE SOLDIERS

STOCHASTIC : GOLDEN CROSS

**MACD : HISTOGRAM NEGATIF MENGECIL DAN
OVERSOLD**

TECHNICAL RECOMENDATION



MEDC – PT MEDCO ENERGI INTERNASIONAL TBK

CLOSING 17/1/2020 RP 835 (+1.2%)

BUY

TARGET PRICE 905

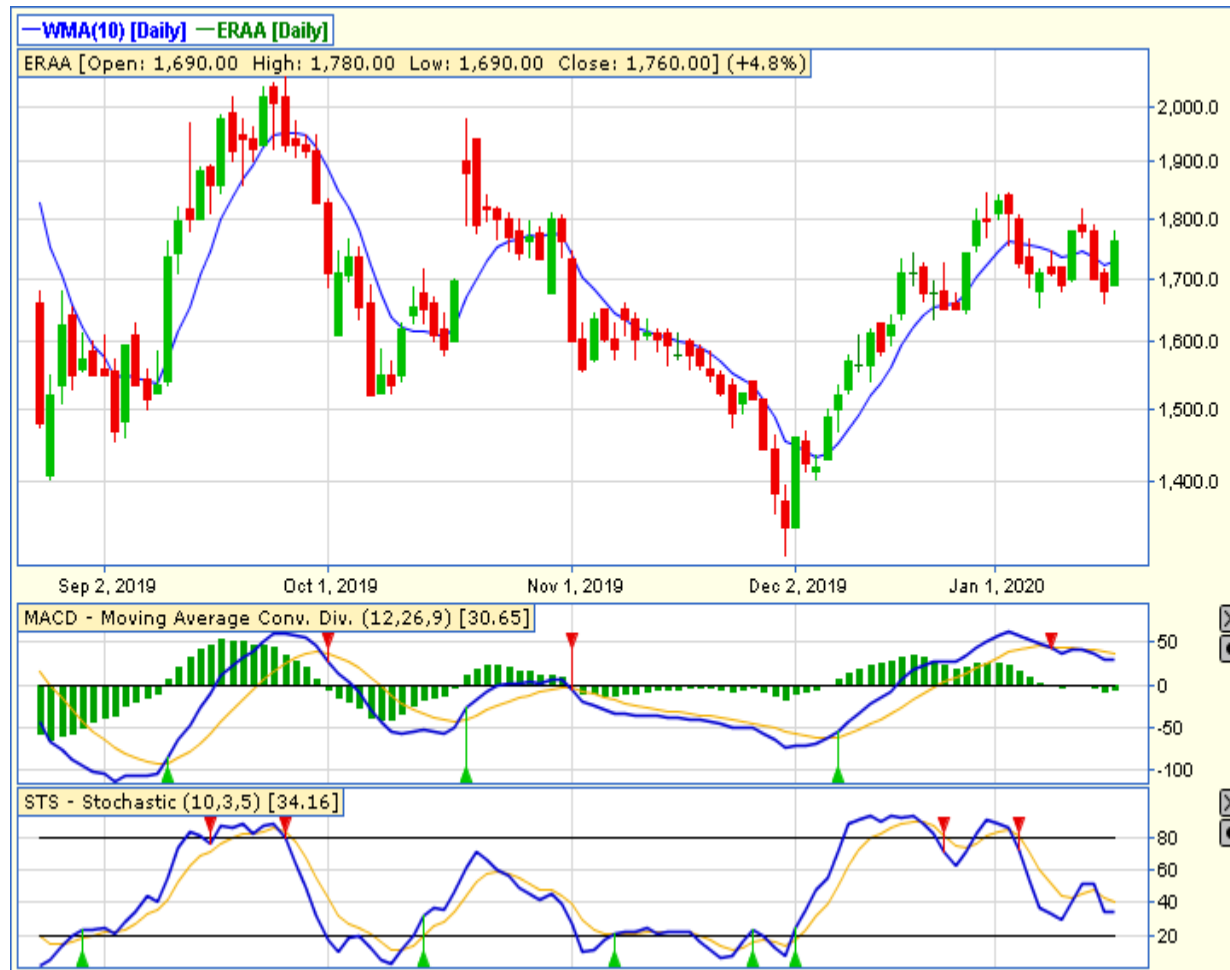
STOPLOSS < 825

DOJI

STOCHASTIC : OVERSOLD

MACD : HISTOGRAM NEGATIF DAN DOWNTREND

TECHNICAL RECOMENDATION



ERAA – PT ERAJAYA SWASEMBADA TBK

CLOSING 17/1/2020 RP 1760 (+4.8%)

BUY

TARGET PRICE 1810

STOPLOSS < 1745

LONG WHITE CANDLE

STOCHASTIC : BERSIAP GOLDEN CROSS

MACD : HISTOGRAM NEGATIF MENGECIL DAN BERSIAP GOLDEN CROSS

TECHNICAL RECOMENDATION



BMTR – PT GLOBAL MEDIACOM TBK

CLOSING 17/1/2020 Rp 366 (+2.2%)

ACCUM BUY 360-376

TARGET PRICE 402

STOPLOSS < 360

BREAK OUT TRIANGLE

STOCHASTIC : UPTREND

MACD : HISTOGRAM POSITIF DAN UPTREND

TECHNICAL RECOMENDATION



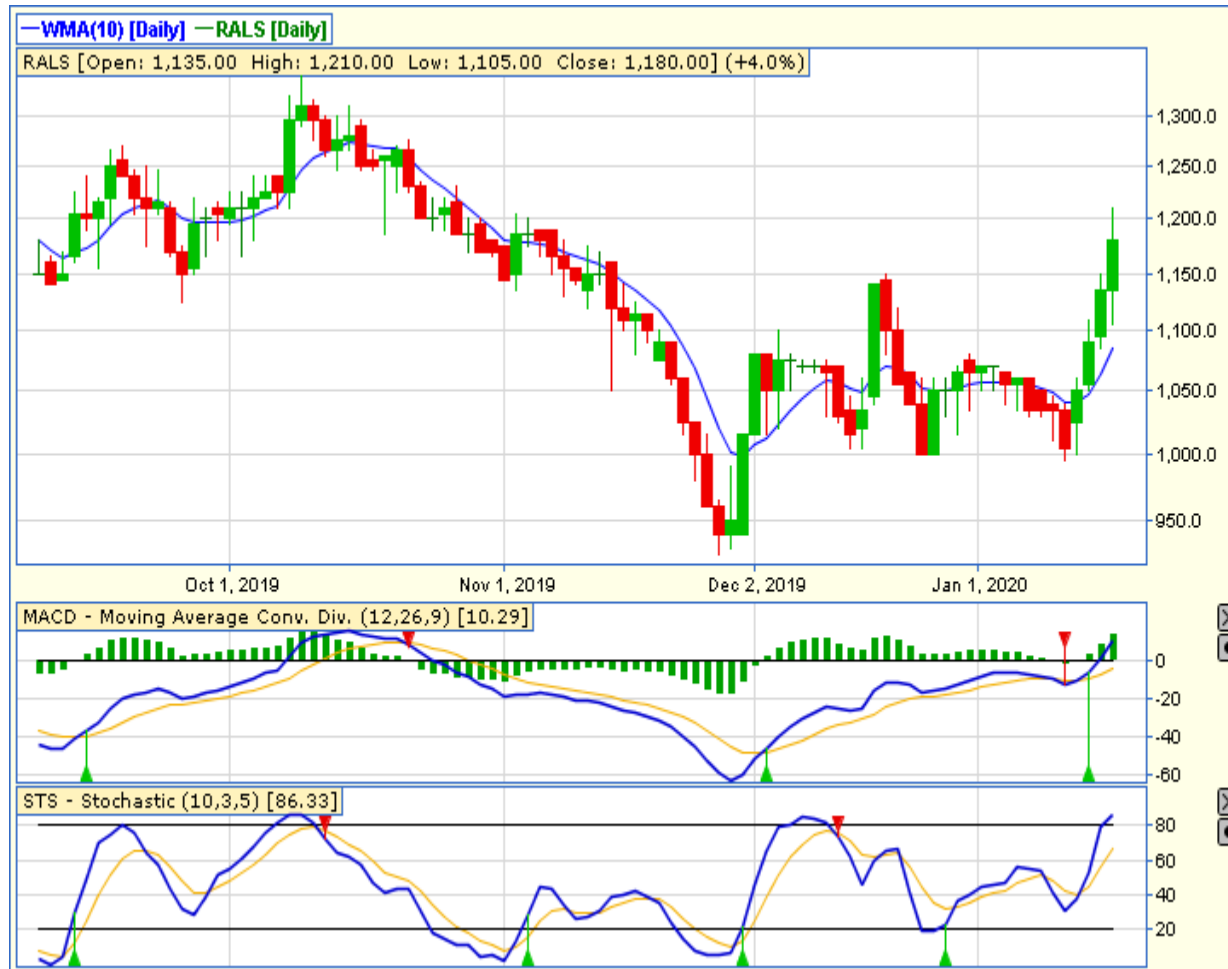
SSIA – PT SURYA SEMESTA INTERNUSA TBK

CLOSING 17/1/2020 RP 700 (+0.7%)

**SELL ON STRENGTH
TAKE PROFIT 715**

MORNING STAR
STOCHASTIC : UPTREND
MACD : HISTOGRAM POSITIF DAN UPTREND

TECHNICAL RECOMENDATION



RALS – PT RAMAYANA LESTARI SENTOSA TBK

CLOSING 17/1/2020 RP 1180 (+4%)

**SELL ON STRENGTH
TAKE PROFIT 1230**

**BREAK OUT TRIANGLE
STOCHASTIC : UPTREND
MACD : HISTOGRAM POSIITF DAN UPTREND**

RESEARCH TEAM



YULIANA

**RESEARCH ANALYST &
CORPORATE FINANCE**



DIMAS WP PRATAMA, CSA

TECHNICAL ANALYST

EQUITY CAPITAL MARKET TEAM



JESSIE JAMES

HEAD OF EQUITY SALES



PRASETYO NUGROHO

HEAD OF DEALING ROOM



GABRIELLA PRATIWY

HEAD OF ONLINE TRADING